



Access Management Software

exgarde Pro is a fully featured Access Management PC software application that combines an extremely intuitive graphical user interface and powerful integration capabilities in a single package. Supporting up to 128 doors as standard with the option to extend this with an unlimited door licence, **exgarde Pro** meets the needs of even the largest of access control networks. With **exgarde Pro** integration and expansion are key features and there are numerous possibilities to integrate with the latest CCTV and biometric technologies. **exgarde Pro** also supports, as standard, the ever popular **microgarde** controller adding even more potential.

Overview of **exgarde Pro**

Features	Benefits
<ul style="list-style-type: none">• Intuitive graphical user interface• In-built Wizards for common tasks• Compatible with Microsoft Windows® 7, Windows® Vista, Windows® XP and Windows® 2000• Integration capability with leading manufacturers of DVR equipment and biometric readers. TDSi microgarde integration included as standard• Custom site graphics with animated icons for instant visibility of information• Fully configurable automated database backup facility• Numerous communication methods including TCP/IP, dial-up and GSM modems• Detailed context sensitive help system• Personnel image capture and Photo ID badge design and print with video verification• Multiple workstation capabilities (subject to license)• Advanced prioritised alarm handling for optimum operator response time• Automatic fire door release function• IP camera connectivity• Integration to third-party ODBC databases (using eXfusion or Microsoft OPC server), building management, fire and intruder systems• Backwardly compatible with previous ranges of TDSi access control units	<ul style="list-style-type: none">• Straightforward operation minimising training requirements• Guides the operator through key operations making use of the software simple• Support for the latest versions of Microsoft operating systems• Provides a means of accessing and controlling third-party equipment through exgarde Pro without the need to run additional applications• Allows simple operation of the system from a purely graphical interface.• Provides peace of mind should things go wrong• High degree of versatility allowing connection methods to suit both local small networks and site wide national and international installations• Assists the operator at the point that help is required• No need to purchase a photo ID badging module. Everything is included as standard• Allows control and administration from more than one PC• Alarm conditions are brought immediately to the attention of the operator• Allows the automatic unlocking of fire doors in the event of a fire¹• Standard feature allowing the display of live video feeds from any netcam camera• A means of seamlessly transferring and populating cardholder data and events between systems.• No need to upgrade hardware

¹Fire door release feature is not to be used as the primary method of releasing fire doors

exgarde Pro



w: www.tdsi.co.uk
e: sales@tdsi.co.uk
t: +44 (0)1202 723535



Access Management Software

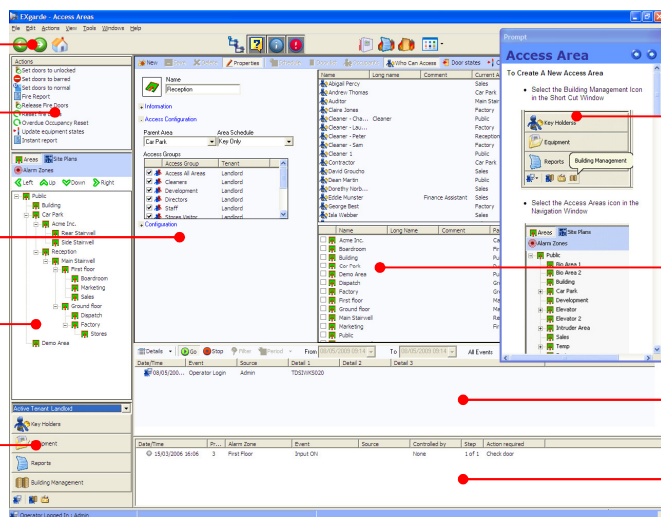
Toolbar with navigation buttons

Actions list

Object properties

Navigation bar

Navigation buttons



Floating prompt window

Working area

Real-time event pane

Alarm Management pane

Technical Data

Max doors	128 as standard, unlimited license upgrade available
Max cards	Controller dependant (no software limit)
Max workstations	25 subject to licence
Max operators	Unlimited
Compatible TDSi controllers	excel2, excel4, expert2, expert4, microgarde® I, microgarde® II, System 1, System 2, System 4, Xm, Xs
Communications	RS-232, RS-485, TCP/IP, dial-up modem (PSTN and GSM)
Recommended PC Specification*	<p>Pentium P4, 1.7 GHz, 1 GB RAM</p> <p>Display set to 1280 x 960, 256 colours or above</p> <p>Microsoft Windows® 2000, Windows® XP Pro (Service pack 1, 2 or 3), Windows Vista Business or Ultimate and Windows 7 Professional or Ultimate</p> <p>10 GB hard disk free space available, CD-ROM drive</p> <p>USB port or parallel port for license key</p> <p>Serial and /or Ethernet ports as required for controller network</p>

*For systems consisting of more than 16 controllers, please consult TDSi for further recommendations

Ordering Information

Part Number:	Product Description:
4420-2090	exgarde Pro
4420-2092	exgarde Pro version upgrade
4420-2094	exgarde Pro feature upgrade (see expansion options datasheet)
4420-2104	Additional 1 workstation
4420-2100	Additional 2 workstations
4420-2101	Additional 4 workstations
4420-2102	Unlimited door option
4420-2103	1 additional tenant

USB dongle supplied as standard, parallel available upon request



w: www.tdsi.co.uk
e: sales@tdsi.co.uk
t: +44 (0)1202 723535
Time and Data Systems International limited
Registered office: Unit 10 Concept Park,
Innovation Close, Poole, Dorset, BH12 4QT
Registered in England: 1585167